

无线水浸探测器

快速操作手册
V1.0.0

浙江大华技术股份有限公司

1.2.51.32.12888-000

前言

概述

本产品是一款无线水浸探测器，当水浸探头检测到有水时，探测器将输出报警信号，通过无线模块上传到报警网关或报警主机，产生报警。

适用型号

DH-ARD910-W

符号约定

在本文档中可能出现下列标志，它们所代表的含义如下。

符号	说明
	危险 表示有高度潜在危险，如果不能避免，会导致人员伤亡或严重伤害。
	警告 表示有中度或低度潜在危险，如果不能避免，可能导致人员轻微或中等伤害。
	注意 表示有潜在风险，如果忽视这些文本，可能导致设备损坏、数据丢失、设备性能降低或不可预知的结果。
	防静电 表示使用静电敏感的设备时，需防止产生静电。
	电击防护 表示高压危险。
	激光辐射 表示强激光辐射。
	窍门 表示能帮助您解决某个问题或节省您的时间。
	说明 表示是正文的附加信息，是对正文的强调和补充。

使用安全须知

下面是关于产品的正确使用方法和、为预防危险、防止财产损失等内容，使用设备前请仔细阅读本说明书并在使用时严格遵守，阅读后请妥善保管说明书。

使用要求

- 请勿随意拆卸设备。
- 请在允许的湿度和温度范围内运输、使用和存储设备。

电源要求

- 请务必按照要求使用电池，否则可能导致电池起火、爆炸或燃烧的危险！
- 更换电池时只能使用同样类型的电池！

关于本文档

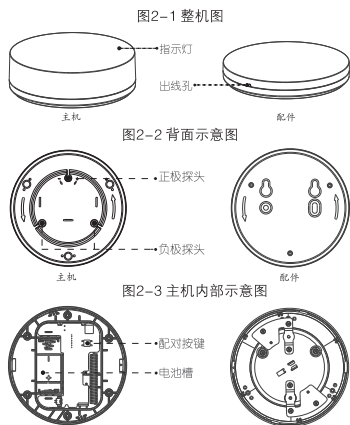
- 产品请以实物为准，本文档仅供参考。
- 如不按照本文档中的指导进行操作，因此而造成的任何损失由使用方自己承担。
- 如获取到的PDF文档无法打开，请将阅读工具升级到最新版本或使用其他主流阅读工具。
- 如果文档中可能提及的其他商标或公司的名称，由其各自所有者拥有。
- 本公司保留随时修改本文中任何信息的权利，修改的内容将会在本文档的新版本中加入，恕不另行通知。产品部分功能在更新前后可能存在细微差异。

- 本文档可能包含技术上不准确的地方、或与产品功能及操作不相符的地方、或印刷错误，以公司最终解释为准。

1 产品特点

- 采用接触式水患探测技术，快速感知水患发生。
- 可调式探针设计，提供不同探测灵敏度。
- 采用高性能RF通信模块，超强通信稳定性。
- 双向RF通信技术，提供远程配置和诊断功能。
- IPX6防水设计，保证水淹后仍可继续工作。
- 超低功耗设计，有效使用寿命长达24个月。
- 支持一体安装和分体安装，适应不同安装环境。

2 产品示意图



3 开始使用

注意事项

避免探测器长时间浸泡在超过0.5米的水中，否则会损坏设备。

配对操作

- 步骤1 开启配套设备（报警网关、报警主机等）的无线对码功能，具体操作请参见配套设备的使用说明书。
- 步骤2 装入探测器电池，电池的安装请参见“4.3.1 电池安装”。指示灯常亮后快闪，开始入网配对。若探测器指示灯快闪后熄灭，则表明配对成功；若探测器指示灯快闪后慢闪三下熄灭，则配对失败，请拆装电池重新配对。

说明

- 如果配套设备支持手机APP添加，则可以通过扫描探测器上的二维码并根据界面提示进行添加。
- 如果探测器已经与其它配套设备配对过，则可以快速按下配对按键（一秒内按5次）来清除之前的配置信息。

探头

- 当探测器正极探头和负极探头同时接触到水，会产生报警。
- 正极探头的高度可调节。往“-”方向旋转，探测灵敏度减小；往“+”方向旋转，探测灵敏度增大。

指示灯

探测器配对时，指示灯会闪烁。

配对按键

轻按配对按键可进入手动配对模式。

快速按下（1秒内按5次）至指示灯常亮且不再闪烁后，即可清除配对信息。

4 产品安装

4.1 安装注意事项

- 工程安装、调试须由专业队伍施行，如遇设备故障，请勿自行拆卸维修，您可以与产品售后部门联系。
- 尽量安装在易漏水点附近。
- 尽量采用分体式安装，以达到更好的通信效果。
- 尽量避免安装在周围有大型金属制品的环境。

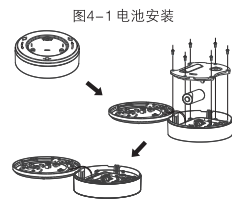
4.2 安装前准备

- 确认已配对成功。
- 用带水迹的手指同时去触碰正极探头和负极探头，查看水浸主机是否有蜂鸣以及配套设备是否发出报警提示音，以保证在此安装位置水浸探测器与配套设备之间可以正常使用。

4.3 安装过程

4.3.1 电池安装

- 步骤1 将主机底座按箭头方向旋转，取下主机底座。
- 步骤2 拧下电池盖板上的6颗螺钉，取下盖板。
- 步骤3 将附件中的CR123A锂电池装入电池槽。
- 步骤4 确认与配套设备完成配对，详细操作请参见配套设备说明书。
- 步骤5 盖回电池盖板，并拧回6颗螺钉。

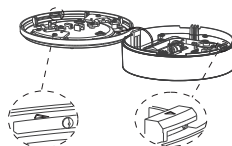


4.3.2 一体式安装

注意

- 一体式安装不涉及配件。
- 步骤1 将线缆整理入主机。
 - 步骤2 将主机底座上的箭头与主机上的箭头对准，合入主机。
 - 步骤3 按主机底座上箭头的反方向旋转，使其紧固。

图4-2 一体式安装



4.3.3 分体式安装

注意

分体式安装可以获得更好的RF通信效果，如果安装环境允许，建议尽量分体安装。

4.3.3.1 螺钉安装

- 步骤1 将线缆从主机中拉出展开。

步骤2 将配件上盖的箭头对准主机底座上的箭头，线缆从配件上盖的出线槽引出，再按图示箭头方向旋转至紧固。

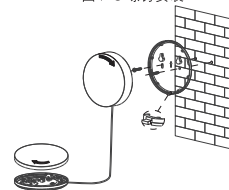
步骤3 按配件底座的孔位，在墙上打孔。

步骤4 装入膨胀管，并通过螺钉将配件底座固定在墙上。

步骤5 将主机上盖的箭头对准配件底座上的箭头，同时将线缆从配件底座的出线槽引出。

步骤6 按图示箭头方向旋转主机上盖，使其紧固。

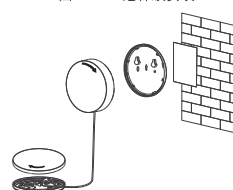
图4-3 螺钉安装



4.3.3.2 3M泡棉胶安装

- 步骤1 将线缆从主机中拉出展开。
- 步骤2 将配件上盖的箭头对准主机底座上的箭头，线缆从配件上盖的出线槽引出，再按图示箭头方向旋转至紧固。
- 步骤3 将3M泡棉胶贴于配件底座的背面。
- 步骤4 将配件底座贴于墙上，墙面要求光滑、干净且坚固。
- 步骤5 将主机上盖的箭头对准配件底座上的箭头，同时将线缆从配件底座的出线槽引出。
- 步骤6 按图示箭头方向旋转主机上盖，使其紧固。

图4-4 3M泡棉胶安装



附录1 技术参数

参数	说明
型号	DH-ARD910-W
探测方式	接触式水患探测
水位监测区间	0.4mm~3.2mm
报警指示	内置蜂鸣器
载波频率	433/868/915MHz
发射功率	10dBm
传输距离	800米（空旷地带）
防水等级	IPX6
电池寿命	二年
工作温度	-10℃~55℃，< 95%
安装方式	地置或壁挂
尺寸	85mm×85mm×29mm（长×宽×厚）
重量	0.25kg



Wireless Flood Detector

Quick Start Guide

Version 1.0.0

1 Features

- Contact flood detection technology, quickly detect occurrence of flood.
- Adjustable probe design, with different sensitivity of detection.
- High performance RF communication module, with strong stability of communication.
- Two-way RF communication technology, provide remote config and diagnosis.
- IPX6 waterproof.
- Super low power consumption, duration up to 24 months.
- Installation available in all-in-one and split suitable for different installation environments.

2 Product Appearance

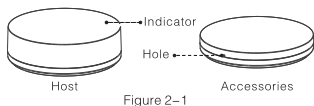


Figure 2-1

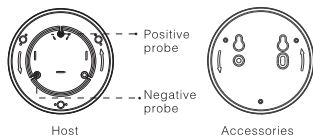


Figure 2-2

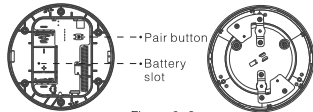


Figure 2-3

3 Start Use

Notifications

Avoid detector being in water depth over 0.5 meters, otherwise device will be damaged.

Pair

- Step 1. Enable wireless enrollment function of paired device (alarm hub, alarm controller and etc), please refer to alarm hub user's manual.
- Step 2. Install battery of detector. Refer to Ch 4.2.1. Indicator turns on and quickly flashes as it starts to pair. If detector indicator turns off after being quickly flashing, it means that pairing is successful. If detector indicator quickly flashes and then slowly flashes for three times before it turns off, it means that pairing failed and please re-install battery to try again.

Note:

- If alarm hub support adding via mobile phone APP, you can scan QR code on detector and add following interface instruction.
- If the detector has paired with other paired device, you can undo previous pairing by quickly clicking Pair button for 5 times within 1 second.

Detector

- When positive probe and negative probe of the detector touch water, it will alarm.
- You can adjust height of positive end of detector. Rotate toward "-" to reduce sensitivity. Rotate toward "+" to increase sensitivity.

Indicator

When detector re-connects, indicator will flash.

Pair Button

Lightly click pair button to enter manual pairing mode. Quickly click (5 times within 1s) it until indicator keeps ON and flash for a few seconds to clear pairing info.

4 Device Installation

4.1 Installation Notifications

- Installation and debugging must be executed by professional staff. If you encounter device failure, please do not open and repair the device, you shall contact its after-sales department.
- Best installation is in places most likely to leak.
- Best installation is split as communication is better.
- Avoid installation in places with a large amount of metal objects.

4.2 Before Installation

- Make sure pairing is successful.
- Touch position probe and negative probe with wet finger at the same time, and check if the device has buzzer or paired device generates beep, in order to confirm that the device at this installation position can work properly with paired device.

4.3 Installation Step

4.3.1 Install Battery

- Step 1. Rotate pedestal of controller in accordance with arrow direction, and take down controller pedestal.
- Step 2. Take down 6 screws on battery cover, and take down cover.
- Step 3. Place CR123A battery accompanied into the battery slot.
- Step 4. Confirm pairing between the device and paired device is complete, refer to user's manual of the paired device.
- Step 5. Put back battery cover, and fasten the 6 screws.

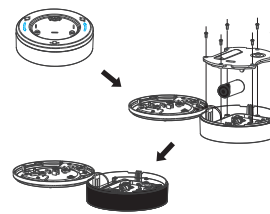


Figure 4-1

4.3.2 Integrated Installation

Warning:

- No accessories is required for integrated installation.

- Step 1. Tidy wiring into the controller.
- Step 2. Aim arrow on controller pedestal at arrow on controller, and close them.
- Step 3. Rotate the pedestal in opposite direction of the arrow to fasten.

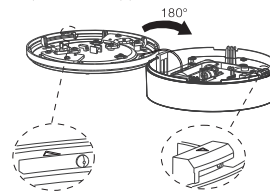


Figure 4-2

4.3.3 Split Installation

Warning:

Split installation can get better RF communication effect. If environment is appropriate, we recommend split installation.

4.3.3.1 Screw Installation

- Step 1. Pull out wiring from controller and expand wiring.
- Step 2. Aim arrow on accessories at arrow on controller pedestal, pull out wiring from exit slot on accessories cover. Follow arrow to rotate it until fastened.
- Step 3. Subject to hole on pedestal of accessories, dig hole on wall.
- Step 4. Insert expansion bolt, and fix accessories pedestal on wall with screw.
- Step 5. Aim arrow on controller cover at arrow on accessories pedestal, meantime pull out wiring from exit hole of accessories pedestal.
- Step 6. Rotate controller cover in accordance with arrow in figure to fasten it.

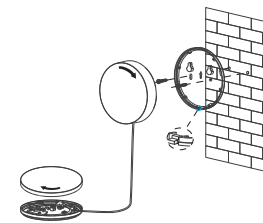


Figure 4-3

4.3.3.2 3M Cotton Adhesive Tape Installation

- Step 1. Pull out wiring from controller.
- Step 2. Aim arrow on accessories at arrow on controller pedestal, pull out wiring from exit slot on accessories cover. Follow arrow to rotate it until fastened.
- Step 3. Stick 3M cotton adhesive tape on back of accessories pedestal.
- Step 4. Stick accessories pedestal on wall. The wall must be soft, clean and firm.
- Step 5. Aim arrow on controller cover at arrow on accessories pedestal, meantime pull out wiring from exit hole of accessories pedestal.
- Step 6. Rotate controller cover in accordance with arrow in figure to fasten it.

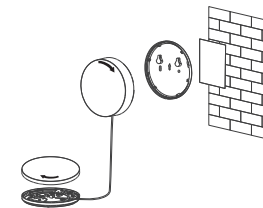


Figure 4-4

Appendix 1: Technical Specifications

Parameter	Note
Model	DHI-ARD910-W
Detection Method	Contact flood detection
Water Level Monitoring Range	0.4mm-3.2mm
Alarm	Built-in buzzer
Carrier Frequency	433/868/915MHz
Transmitting Power	10dBm
Transmission Distance	800 meters (open area)
Waterproof Level	IPX6
Battery Life	2 years
Work Temperature and Humidity	-10°C ~55°C, < 95%
Installation	Ground or wall mount
Dimensions	85×85×29mm (L×W×T)
Weight	0.25kg

Note:

- This manual is for reference only. Slight difference may be found in user interface.
- All the designs and software here are subject to change without prior written notice.
- All trademarks and registered trademarks are the properties of their respective owners.
- If there is any uncertainty or controversy, please refer to the final explanation of us.
- Please visit our website or contact your local service engineer for more information.

1 2 51 32 12588-000