



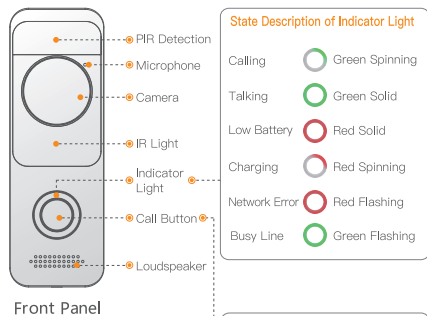
Quick Start Guide

Version 1.0.0

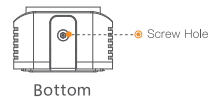
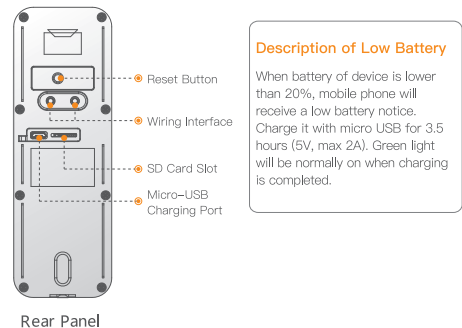


1.2.51.32.14082-000

Product Appearance

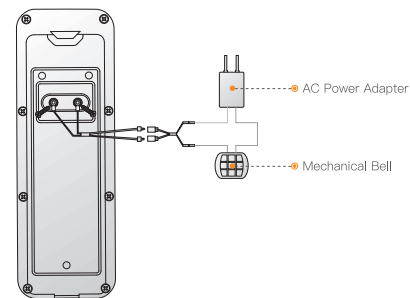


Поставщик систем безопасности TELECAMERA.RU



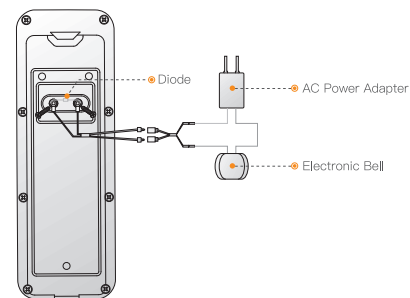
Description of Wiring Hole

(1) Connect Mechanical Chime Box



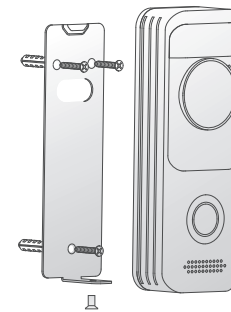
(2) Connect Electronic Chime Box

Diode is used to connect both ends.



Device Installation

- Loosen M3x6 screws at the bottom of the device, and dismantle the installation bracket from the device.
- Drill holes in the wall according to hole positions of installation bracket, and install a plastic expansion pipe.
- Fix the bracket onto the wall with three ST3x20 self-tapping screws.
- Connect cables.
To connect existing mechanical/electronic doorbells at home, connect cables according to the user's manual. Otherwise, it is unnecessary to connect cables.
- Put the device into the slot at the top of the bracket from top to bottom.
- Fix the device onto the bracket with M3x6 screws.





Start to Use

Note:

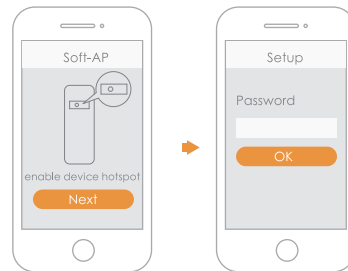
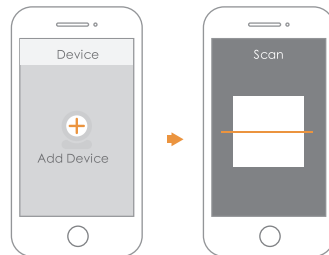
For initial use, please press the call button for 5s to wake the device.

Step 1: Download and log onto App

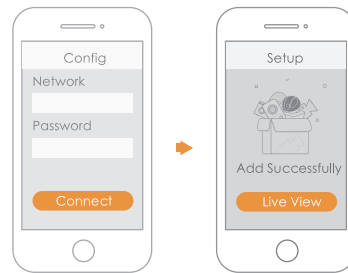
- 1 Connect your smartphone to your Wi-Fi network, scan the QR code on the packing box, download and install the imou App.
- 2 Run imou App, and register an account for the first use.

Step 2 Add Device

- 1 At device list interface, press "+" to enter "QR Code Scanning" interface.
- 2 Scan QR code on the back of the doorbell to get the SN; you can also manually enter the SN on the next page.
- 3 Press Reset Key on the rear panel of the device. If indicator flashes, it means that device hotspot is on.



- 4 Connect mobile phone Wi-Fi with device hotspot.
- 5 Go back to imou App page, and set password for your doorbell.
- 6 Follow the App guide to connect your doorbell.



FAQ

► How to restore default settings?

Please press Reset Button for 5s to restore default settings. After completion, green light will be on for 3s and then turn off; the device will reboot automatically and restore default settings.

► The device cannot work normally?

Please restore default settings of the device, and configure the device again.

► How to enter wireless configuration mode?

Please press Reset Button on the rear panel of the device, until the indicator light turns to be green circular light, it means that hotspot has been enabled.

► The device is not online?

Please check the state of device indicator light. If red light flickers all the time, it means that the device fails to connect the network. Please check whether wireless router can access the Internet. To test it, you can connect your smartphone to the same network, and check whether it can access Internet.

► Connection is overtime?

- a. The device, mobile phone and router are too far away. please put them within 30cm (12 inches) when configuring.
- b. Please reset the device to factory defaults and follow the guide on App page to try again.

► The device cannot boot up?

Please confirm battery of the device. In case of low battery, please charge.

Safety Tips and Warnings

The following description is the correct application method of the device. Please read the manual carefully before use, in order to prevent danger and property loss. Strictly conform to the manual during application and keep it properly after reading.



- ◆ Please don't place and install the device in an area exposed to direct sunlight or near heat generating device.
- ◆ Please don't install the device in a humid, dusty or fuliginous area.
- ◆ Please keep its horizontal installation, or install it at stable places, and prevent it from falling.
- ◆ Please don't drip or splash liquids onto the device; don't put on the device anything filled with liquids, in order to prevent liquids from flowing into the device.
- ◆ Please install the device at well-ventilated places; don't block its ventilation opening.
- ◆ Use the device only within rated input and output range.
- ◆ Please don't dismantle the device arbitrarily.
- ◆ Please transport, use and store the device within allowed humidity and temperature range.
- ◆ Products with category I structure shall be connected to grid power output socket, which is equipped with protective grounding.

Disclaimer

- This quick start guide is for reference only. Minor difference might be found in user interface.
- All the design and software here are subject to change without prior written notice.
- All trademarks and registered trademarks mentioned are the properties of their respective owners.
- Please visit our website or contact your local service engineer for more information.
- If there is any uncertainty or controversy, please refer to our final explanation.