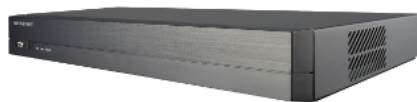


QRN-410S

4CH 8M H.265 NVR with PoE Switch



Key Features

- Up to 4ch 8megapixel supported
- H.265, H.264, MJPEG codec supported
- 40Mbps network camera recording
- Plug & play by 4 PoE ports
- Max. 1HDD supported
- HDMI local monitor
- P2P service (QR code connect) support

Display

Network camera	Inputs	Max. 16CH
	Resolution	8MP ~ CIF
	Protocols	Wisenet, ONVIF

Decoding	Local Display	HDMI: 3840 x 2160, 1920x1080, 1280x720
	Resolution	8MP(60fps), 5MP(90fps), 3MP(120fps), 2MP(120fps), 720p(120fps), D1(120fps)

Performance

Record	Compression	H.265, H.264, MJPEG
	Recording Bandwidth	Max. 40Mbps
	Resolution	8MP ~ CIF
	Mode	Normal, Schedule(Continuous/Event), Event (Pre/Post)
	Event Trigger	Alarm Input, Video Loss, Camera Event(Alarm, MD, Video Analytics, Defocus)
	Event Action	e-Mail, PTZ Preset, Alarm Out, Buzzer, Monitor Out

Search & Play	Playback Bandwidth	Max. 32Mbps(4CH simultaneously)
	User	Max. 4 Users (Local 1, Remote 3)
	Simultaneous playback	Max. 4CH(Local Monitor, Network)
	Fisheye Dewarping	WEB / CMS

Storage	Supported HDD	Up to 6TB
	HDD Slot	SATA 1ea(Max. 6TB)

Backup	File backup	BU/Exe(GUI), JPG/AVI(Network)
	Function	Multi channel(Upto 4CH) Play, Date-Time/Title display

Network

Protocol	IPv4, IPv6, TCP/IP, UDP/IP, RTP (UDP), RTP (TCP), RTSP, NTP, HTTP, DHCP (Server, Client), PPPoE, SMTP, ICMP, IGMP, ARP, DNS, DDNS, uPnP, HTTPS, SNMP, ONVIF (Profile-S), SUNAPI(Server, Client)
----------	---

DDNS	Wisenet DDNS
------	--------------

Transmission Bandwidth	Max. 50Mbps
------------------------	-------------

Audio	Input/Output	4 CH(network)
	Compression	G.711, G.726, AAC(16/48KHz)
	Audio Communication	2-Way

Max Remote Users	Search(3), Live Unicast(10), Multicast(20)
------------------	--

Security	IP address filtering, User access Log, 802.1x, Encryption
----------	---

Web viewer	Supported OS	Windows 7, 8, 10, Mac OS X 10.9. 10.10. 10.11
------------	--------------	---

Web viewer	Supported browser	Plug-in free web viewer - Supported Browser: Google Chrome 47, MS Edge 20 Plug-in Webviewer - Supported MS Explore 11, Apple Safari 9 * Mac OS X only
------------	-------------------	--

Viewer Software	SSM, Webviewer, Smart Viewer, Wisenet mobile Support SDK/CGI(SUNAPI) for integration to 3 rd party VMS
-----------------	--

Functions

Camera Setup	Item	IP address, Add profile edit, Bitrate, Compression, GOP, Quality, Camera MD setup Camera video setup (Simple focus, Brightness/Contrast, Flip/Mirror, IRIS, WDR, D&N, SSNR, Shutter, SSDR, DIS), Fisheye Dewarping Mode, Hallway View Setup, Camera Webpage
PTZ	Control	Via GUI, Webviewer, SPC-2000
Smart phone	Support Model	iOS, Android
	Protocol Support	RTP, RTSP, HTTP, CGI(SUNAPI)
	Control	Live(Multi-Profile Support), Playback
	Max. Remote Users	Search(3), Live Unicast(10)
Redundancy	ARB	Support
Easy configuration		P2P(QR code)
Interface		
HDMI		1EA
Ethernet		RJ-45(10/100/1000BASE-T) x 1
USB		2EA(Front 1, Rear 1)
System		
System Control		Mouse, IR remocon, Web, Controller
Language		English, French, German, Italian, Spanish, Russian, Turkish, Polish, Dutch, Swedish, Czech, Portuguese, Danish, Rumanian, Serbian, Croatian, Hungarian, Greek, Norwegian, Finnish, Korean, Chinese, Japanese, Thai
Environmental		
Operating Temperature		0°C to +40°C(32°F to 104°F)
Operating Humidity		20% ~ 85% RH
Electrical		
Power Input		54VDC / 1.20A
Power Consumption		Max. 47W(1HDD, PoE on) Max. 7.4W(1HDD, PoE off)
PoE Budget		Max. 30W
Mechanical		
Color / Material		Black / Metal
Dimension (WxHxD)		W300.0 x H47.1 x D208.4 mm (11.8" x 1.85" x 8.2") (1U)
Weight		0.99Kg (2.18lb)

- The latest product information / specification can be found at hanwha-security.com
- Design and specifications are subject to change without notice.
- Wisenet is the proprietary brand of Hanwha Techwin, formerly known as Samsung Techwin.

QRN-410S
UNIT : mm[inch]

