

# User's Manual

ASL91 Smart Lock  
V1.0.0

ZHEJIANG DAHUA VISION TECHNOLOGY CO., LTD.

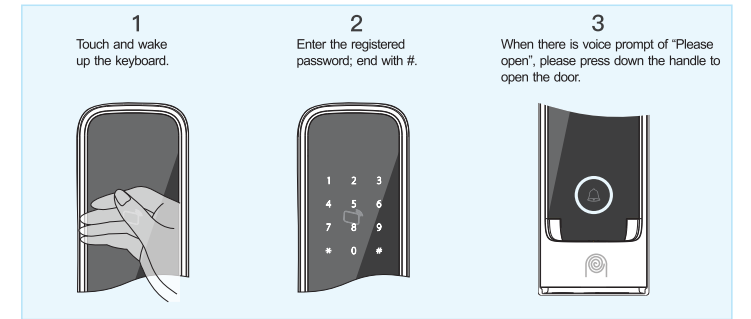
LOD-PA6E120-1521

## 04 Basic Operations

### Open Door with Password

#### CAUTION

This product owns security protection function. If the entered password is wrong for 5 times continuously, the system will be locked forcibly for 3 minutes. After 3 minutes, the system will be unlocked automatically, or long press "Registration Button" for 3s to unlock the system.

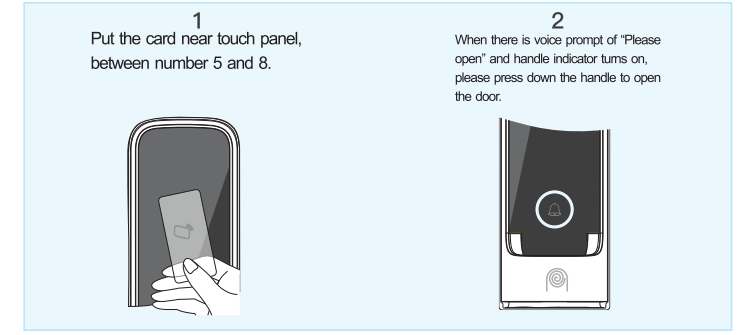


**NOTE:**  
This product protects password from being peeped. Any numbers can be entered before and after the registered password. (For example, any numbers + registered unlock password + any numbers)

### Open Door with Card

#### CAUTION

This product owns security protection function. If invalid card is swiped for 5 times continuously, the system will be locked forcibly for 3 minutes. After 3 minutes, the system will be unlocked automatically, or long press "Registration Button" for 3s to unlock the system.

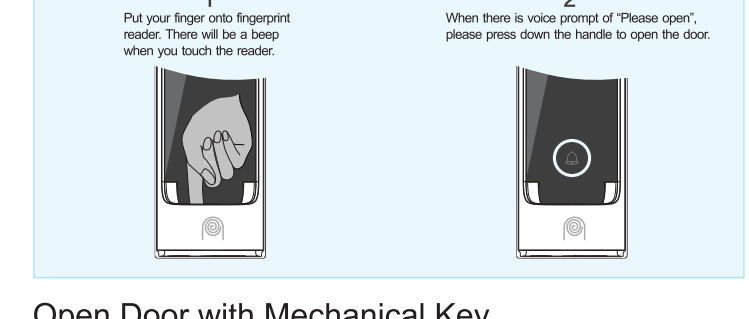


**NOTE:**  
If an unregistered card is used, the system prompts "Invalid".  
A broken card cannot be used any more. If registered card is not deleted, it is suggested that the invalid card should be cut into pieces and then discarded. Moreover, please register new card timely.

### Open Door with Fingerprint

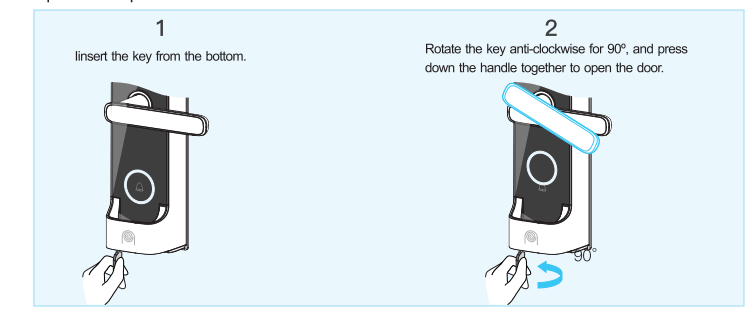
#### CAUTION

This product owns security protection function. If wrong fingerprint is read for 8 times continuously, the system will be locked forcibly for 3 minutes. After 3 minutes, the system will be unlocked automatically, or long press "Registration Button" for 3s to unlock the system.

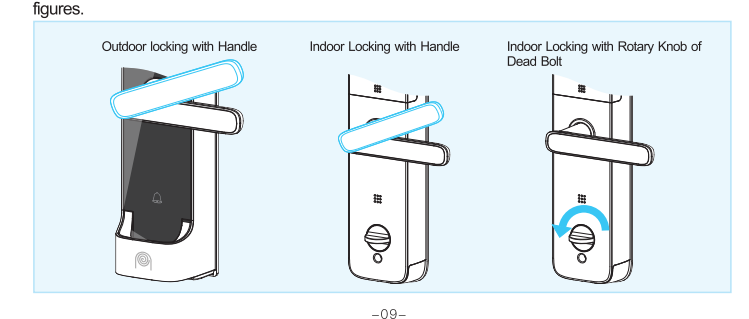


### Open Door with Mechanical Key

**NOTE:**  
Please keep mechanical key properly for future use.  
To open the door, rotation direction of mechanical key is irrelevant with lock mounting direction. The mechanical key shall be rotated clockwise.  
The key can be pulled out after returning to original position.

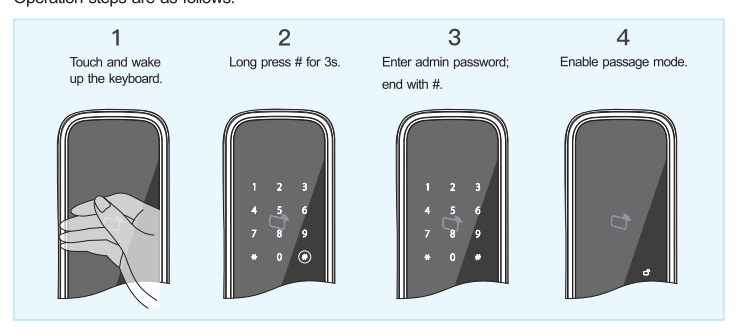


### Close Door and Lock



### Passage Mode

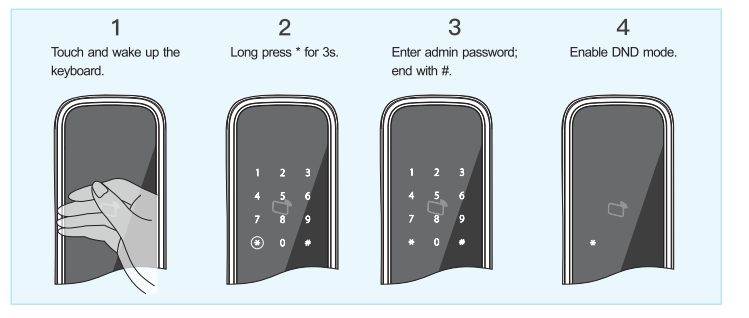
In the passage mode, lock handle is always effective. Each time, press down the handle, and the lock will be opened.



**NOTE:**  
Exit the passage mode: long press # for 3s, enter admin password when you hear a beep, and then end with #.

### DND Mode

In DND mode, all registered unlock passwords, cards and bonded mobile clients will be restricted, so as not to disturb the user.



**NOTE:**  
Exit DND mode: long press \* for 3s, enter admin password when you hear a beep, and then end with #.  
In DND mode, the lock can be opened with admin password or admin fingerprint. Unlock with admin password: short press \*, enter admin password and then end with #.

### FAQ

Question	Solution
Card reading is valid, but the door cannot be opened.	The product subjects to mounting position error or mechanical failure of the lock. Please contact the customer service personnel. Please check whether the key is returned to original position completely. To open the door, rotate the key and then press down the handle.
The key cannot be pulled out, rotated or fail to open the door.	Please use 9V battery to open the door in case of emergency, and then replace the battery timely.
It doesn't respond to operation and it prompts low power.	Protective film on the touch panel is scratched easily. Please remove the protective film before use. Your palm shall stay on the touch panel for about 1s.
Touch panel of new lock is scratched.	Please check whether the mobile phone has enabled Bluetooth, and lock is within valid scope of Bluetooth.
Fail to wake up the touch panel.	
Fail to open the door with the client.	

### Technical Parameter

**NOTE:**  
Please refer to actual models of the product.

Item	Parameter
Fingerprint module	Capacitive (biotech)
Fingerprint capacity	100
Card type	Mifare 1
Card feature	Non-contact, high security, all-purpose card, ID card
Induction distance	< 20mm
Induction time	< 0.5s
Card capacity	100
Keyboard type	Touch key
Password length	6 ~ 12 digits
Password capacity	100
Privacy password	Any numbers can be added before and after the unlock password.
Working voltage	DC4.5V~6.5V, four 1.5V AA alkaline battery
Battery life	About 14 months (10 times/day)
Low power alert	< DC4.5V
Emergency power	9V battery
Auto locking	The system will be locked for 3 minutes, in case of 3 wrong passwords continuously, 5 wrong cards continuously or 8 wrong fingerprints continuously.
Door status prompt	DND mode, passage mode and general mode
Applicable door thickness	40mm~95mm
Positioning dimension	60mm edge distance and 68mm center distance
Product standard	National Standard GA701-2007 (Burglary Resistant Fingerprint Locks)
Working temperature	-10°C~55°C
Relative humidity	10%~93%
Restore factory defaults	Support
System reset	Support
Built-in buzzer	Support
Built-in loudspeaker	Support
Bluetooth	Support (Bluetooth series)
Doorbell	Support

## Important Safeguards and Warnings

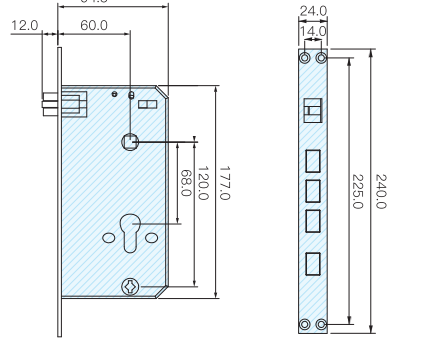
Please read the manual carefully before use, in order to prevent danger and property loss. Strictly conform to the manual during application and keep it properly after reading.

- Operating Requirement**
- Please don't disclose your password to others. Change password regularly.
  - Please don't fill water into the product on purpose.
  - Please replace the battery as soon as possible, in case of low power alert.
  - During battery installation, please check whether positive and negative pole directions are the same as the indications in battery box. Wrong direction may lead to rupture, leakage and heat.
  - Please don't touch the keys frequently unconsciously, don't touch the keys with ball pen or other hard objects.
  - During cleaning, please don't wipe the product with strong acid, strong alkali, corrosive organic solvents or polishing objects, so as not to damage the appearance.

**Privacy Protection Notice**  
As the device user or data controller, you might collect personal data of others, such as face, fingerprints, car plate number, Email address, phone number, GPS and so on. You need to be in compliance with the local privacy protection laws and regulations to protect the legitimate rights and interests of other people by implementing measures, including but not limited to: providing clear and visible identification to inform data subject the existence of surveillance area and providing related contact.

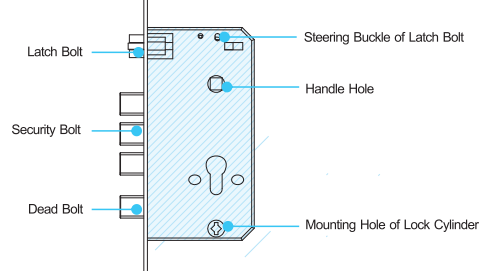
- About the Manual**
- The Manual is for reference only. If there is inconsistency between the Manual and the actual product, the actual product shall prevail.
  - We are not liable for any loss caused by the operations that do not comply with the Manual.
  - The Manual would be updated according to the latest laws and regulations of related regions.
  - For detailed information, see the paper User's Manual, CD-ROM, QR code or our official website.
  - If there is inconsistency between paper User's Manual and the electronic version, the electronic version shall prevail.
  - All the designs and software are subject to change without prior written notice. The product updates might cause some differences between the actual product and the Manual. Please contact the customer service for the latest program and supplementary documentation.
  - There still might be deviation in technical data, functions and operations description, or errors in print. If there is any doubt or dispute, please refer to our final explanation.
  - Upgrade the reader software or try other mainstream reader software if the Guide (in PDF format) cannot be opened.
  - All trademarks, registered trademarks and the company names in the Manual are the properties of their respective owners.
  - Please visit our website, contact the supplier or customer service if there is any problem occurred when using the device.
  - If there is any uncertainty or controversy, please refer to our final explanation.

Dimensional Drawing of Lock (Unit: mm)

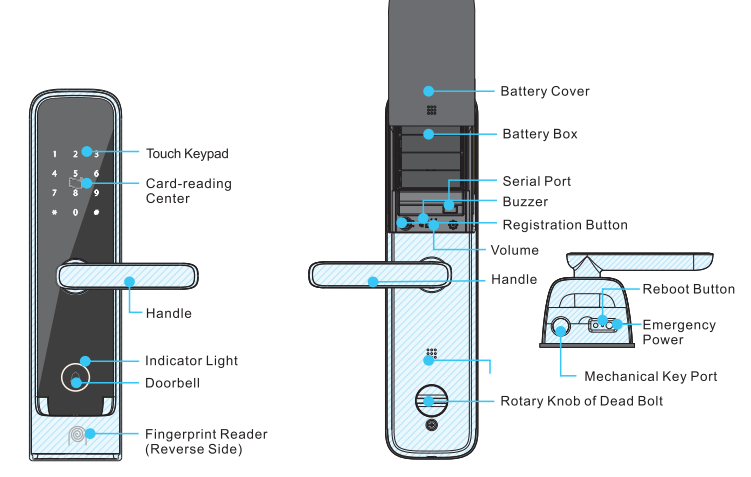


## 02 Instruction

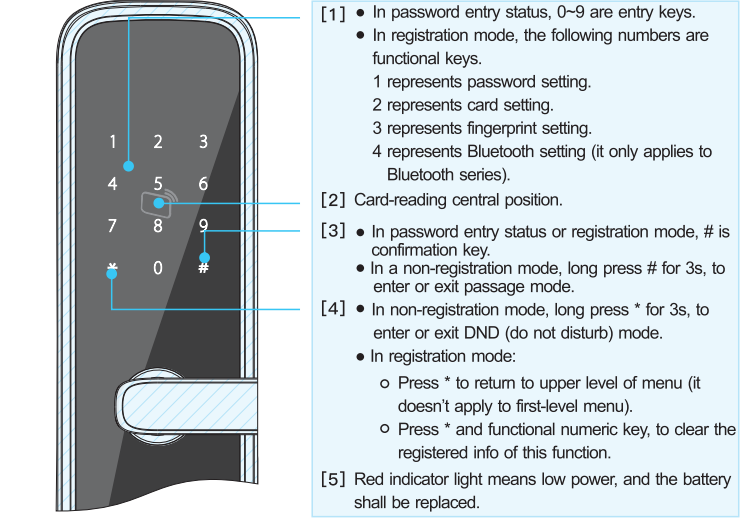
### Lock Body



### Panel



### Interface

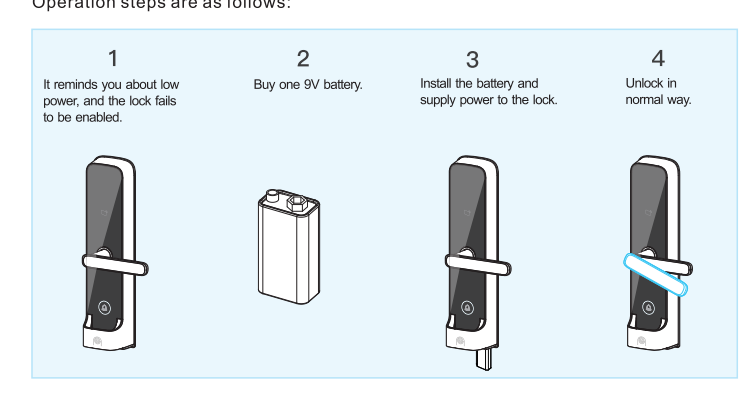


### Replacement of Battery

When there is voice prompt of low power, the battery shall be replaced as soon as possible, or normal use will be affected.

- NOTE:**
- Battery direction shall be correct, or it will fail to use normally.
  - Battery leakage may lead to product fault. Please check it regularly (once every 6 months).
  - After low power alert appears and before battery is replaced, password, card or fingerprint management may fail to work normally.
  - After the low power alert, if you press "Registration Button", there will be voice prompt of low power. At the time, new user cannot be added.
  - Prohibit new and old batteries together.

### Emergency Battery

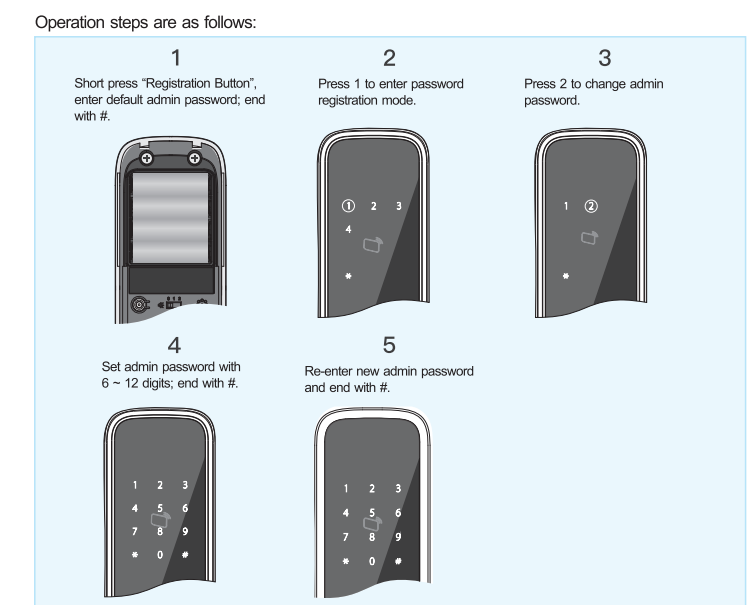


## 03 Settings

### Change Admin Password

#### CAUTION

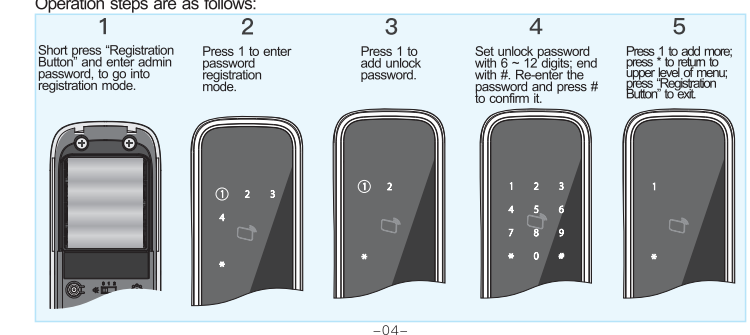
- Default admin password is 123456, which owns unlock authority.
- The device is in the initialization state during the first installation, the lock can be opened without need for password, fingerprint and card. For the sake of security, the system requires the user to change admin password.
- Admin password doesn't serve as unlock password, so it cannot open the door. Admin password can open the door only in DND mode.
- If you forget admin password, enter registration mode with admin fingerprint, and then change it.



### Password Registration

#### CAUTION

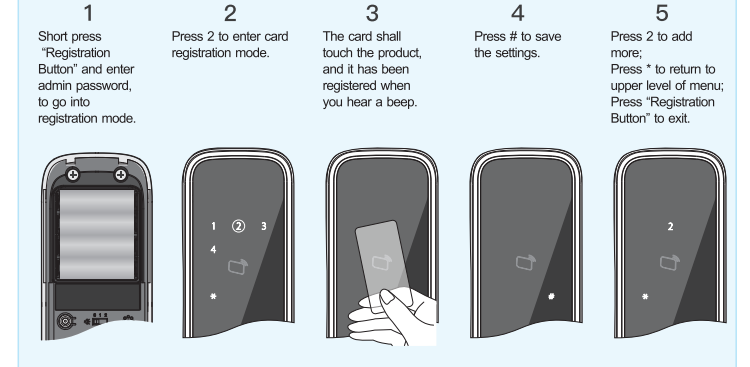
- Unlock password consists of 6 ~ 12 numbers; it shall not be less than 6 numbers or more than 12 numbers.
- 100 groups of password can be registered. In case of exceeding the limit, the system prompts "Over the limit, registration failed", and enters sleep mode.



### Card Registration

#### CAUTION

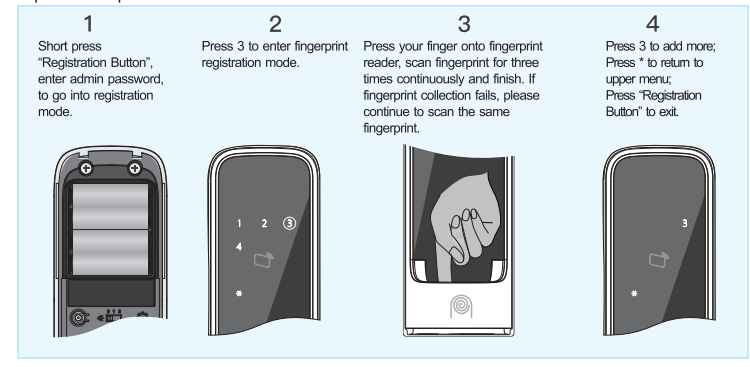
- Registered card turns into electronic key. Please keep it properly, and delete the registered card immediately after it is lost.
- 100 cards can be registered. In case of exceeding the limit, the system prompts "Over the limit, registration failed", and enters sleep mode.



### Fingerprint Registration

#### CAUTION

- The first successfully registered fingerprint is admin fingerprint, which can replace admin password to go into registration mode.
- If fingerprint registration duration exceeds the stipulated time, the system prompts "Overtime".
- 100 fingerprints can be registered. In case of exceeding the limit, the system prompts "Over the limit, registration failed", and enters sleep mode.



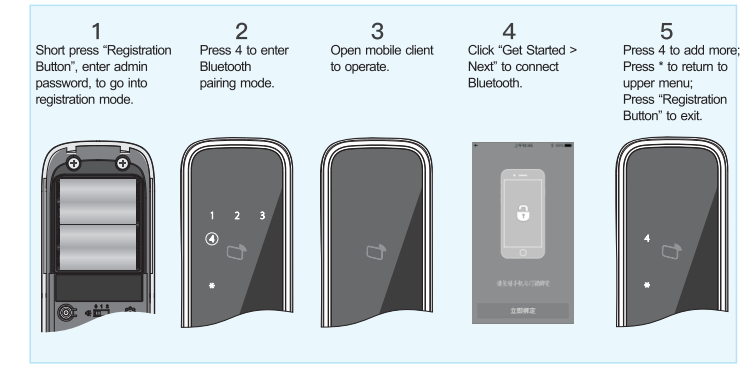
### Bluetooth Pairing

#### CAUTION

- This function only supports Bluetooth series smart lock product.
- Before setting Bluetooth function, please scan the QR code to download and install App (Dahua smart lock client).

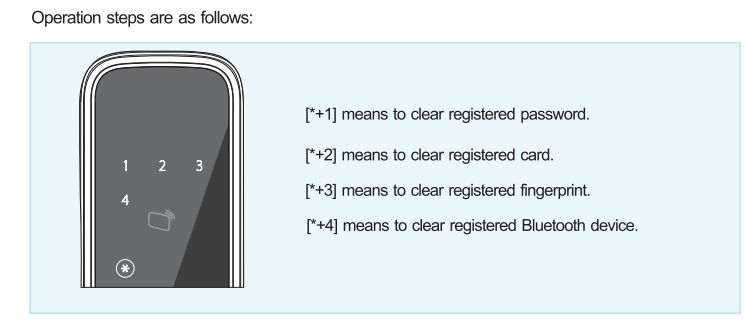


The lock is paired via Bluetooth; max. 8 mobile clients can be paired, so as to open door with client, share temporary secret key and inquire opening records.



- NOTE:**
- It represents pairing success if mobile client enters exit button interface. In case of pairing failure, mobile interface prompts "Pairing failure. Please try again."
  - After successful Bluetooth pairing, if mobile client turns off Bluetooth or goes beyond Bluetooth connection range of the lock, Bluetooth will disconnect automatically, and outer ring of "Exit Button" turns gray. Bluetooth will connect automatically after the client gets close to the lock.

### Delete



## 01 Product Structure

### External dimension

